



PRSRT STD
 US Postage Paid
 Permit # 9
 St. Peter, MN 56082

The Nicollet Soil and Water Conservation District

424 South Minnesota Ave.
 St. Peter, MN 56082.
Phone: (507) 931-2550 ext.3
Fax: (507) 931-3792

District Board

Gerald Rodning, *Chair*
 John Kral, *Vice Chair*
 William Hohenstein, *Secretary*
 Eldon Brown, *Treasurer*
 Bruce Hulke, *Member*

District Employees

Kevin Ostermann
District Manager
 Blake Honetschlager
District Technician

Environmental Quality Incentives Program (EQIP) Sign-up Announced

The USDA Natural Resource Service (NRCs) announced the start of the continuous sign up for the EQIP program on December 4, 2006. EQIP is the heart of NRCs' working lands conservation programs. It is the primary tool for landowners who want to put soil and water conservation on the land. EQIP provides technical assistance and cost-share payments to producers.

Although EQIP is a continuous sign-up program, ***all applications must be received by the close of business on January 31, 2007 in order to be considered in the initial scoring period.*** Each application will be scored and ranked, and funding decisions will be made shortly thereafter.

The second scoring period for EQIP will run the entire month of February. Landowners and producers interested in EQIP are encouraged to do their sign-up early. EQIP practices include Residue Management, Nutrient Management, Pest Management, Terraces, Waterways, Ag-Waste Systems, Erosion Control, Windbreaks, and many other conservation practices.

If you have natural resource concerns on your land and are interested in making a commitment to conservation, EQIP could be the answer you have been looking for. For further information regarding the EQIP program, contact Stephanie at (507) 931-2550 ext.3 or visit the MN NRCs website: www.mn.nrcs.usda.gov

Mark Your Calendar:

2007 TREE SALES: Remember to send in your tree order forms (Order form included in this newsletter). Orders can be sent in anytime between January 1st 2007 through March 30th 2007. Contact Blake with any questions 931-2550 ext 3.

ON FARM DEMONSTRATION: There will be an On-Farm Nitrogen Rate Results Meeting on Feb. 15th, location to be determined. For more information, and location, please contact Kevin Kuehner with the BNC Water Quality Board at 507-934-4140, or Blake Honetschlager with the Nicollet SWCD at 507-931-2550.

FREE WELL WATER TESTING: The BNC Environmental Health Office is planning to test well water samples coming up this Spring. For more information please contact Carol, or Marcy by calling 507-933-4140. Bacteria testing will also be available for a small fee.

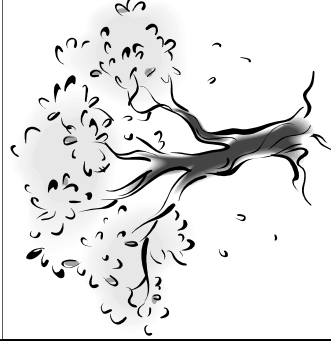
2007 TREE SALES:

It is that time again to start thinking about the 2007 tree planting season. We will be holding our annual **Tree Day on Thursday, February 8th, from 10:00 a.m. to 4:00 p.m.** at our office located at 424 South Minnesota Ave. in St. Peter. (This is right across from the Nicollet County Courthouse).



The District will help in making recommendations on what type of trees should be planted in different soil types, spacing, wildlife plantings and tree plans for larger plantings. If you are unable to attend that day, you can mail in the order blank included in this newsletter. Please Mail to "Tree Program, 424 South Minnesota Ave., St. Peter, MN 56082."

If you were affected by the storms this fall, the district can offer cost share funds to help pay for the cost of your windbreak replacement. Cost share funds can cover up to 75% of the eligible cost for replacement of windbreaks. Also note, windbreak replacement due to these storms will be on a high priority for this years Cost Share program, and funding will be available on a first come basis.



Clarifying the 1026 Form for Tiling

Stephanie McLain, DC Nicollet County

It's inevitable...every time you plan to tile, clear some land or sign up for Farm Programs all operators need to complete the FSA-1026 Form.

When you come to the office to complete a FSA-1026 Form for tiling, take along any information you can about your previous activities. We need a completed Drainage Worksheet for every tiling request. In the drainage worksheet it asks for current and planned tile, either drawn on an FSA map or a copy of your tile maps; and some history of the site.

The table to the right gives a brief description of activities that need a FSA-1026 Form completed before you begin the activity. Please call the Nicollet County NRCS of FSA at 507-931-2550 if you have any questions about tiling activities.

Other federal, state or local permits or restrictions may apply to activities impacting wetlands. It is the responsibility of the participant to obtain other necessary permits. Contact the Army Corps of Engineers for Clean Water Act permits, the Local Government Unit (LGU) for State Wetland Conservation Act permits, and the Minnesota Department of Natural Resources for protected water permits prior to initiating wetland activities.

If I perform this activity:	Do I need to complete a 1026?
Install a completely new tile system...	YES
Adding Tile lines to an existing tile system...	YES
Ditch Maintenance or Cleanout is occurring on a ditch that runs through my property...	YES
Cutting and stumping trees for crop production, even removing trees from the line fence and around non-cropped wetlands.	YES
Road upgrades and route changes...	YES
Receiving a Farm Facility Loan from FSA to build new building	YES
Taking land out of production to build on....	YES
Moving earth to level a hill...	YES
Running tile through your neighbor's land...	YES-from your neighbor
Performing maintenance on an intake blowout or crushed tile...	YES



2007 TREE PROGRAM

NICOLLET SOIL AND WATER CONSERVATION DISTRICT
424 SOUTH MINNESOTA AVE., ST. PETER, MN 56082
PHONE: (507) 931-2550 ext. 101

QUALITY NURSERY STOCK FOR CONSERVATION

CONIFER TRANSPLANTS

1 Bundle = 10 Trees

Species	Size	# of Bundles	Cost	Total Cost
Blackhills Spruce	12"-18"	X	12.50/Bundle	=
Colorado Spruce	12"-18"	X	12.50/Bundle	=
Norway Spruce	7"-15"	X	12.50/Bundle	=
Norway Pine	7"-15"	X	10.50/Bundle	=
White Pine	8"-12"	X	10.50/Bundle	=
Pondersoa Pine	8"-15"	X	12.50/Bundle	=
American Arborvitae	12"-18"	X	12.50/Bundle	=

CONIFER POTTED

Orders by 5 please

Species	Size	# of Trees	Cost	Total Cost
Blackhills Spruce P	15"-18"	X	6.50/Tree	=
Colorado Spruce P	15"-18"	X	6.50/Tree	=
Norway Spruce P	15"-18"	X	6.50/Tree	=

IMPORTANT NOTICE
If trees will be used for government programs please let our staff know.

DECIDUOUS SEEDLINGS

1 Bundle = 10 Trees

TALL TREES

Species	Size	# of Bundles	Cost	Total Cost
Black Walnut	12"-18"	X	9.90/Bundle	=
Green Ash	2'-3'	X	9.90/Bundle	=
Hackberry	18"-24"	X	9.90/Bundle	=
Norway Poplar	2'-3'	X	9.90/Bundle	=
Silver Maple	18"-24"	X	9.90/Bundle	=
Sugar Maple	18"-24"	X	9.90/Bundle	=
Red Maple	18"-24"	X	9.90/Bundle	=
Red Oak	18"-24"	X	9.90/Bundle	=

SMALL TREES

Species	Size	# of Bundles	Cost	Total Cost
Amur Maple	18"-24"	X	9.90/Bundle	=
Crab, Red Splendor	18"-24"	X	9.90/Bundle	=
Nanking Cherry	18"-24"	X	9.90/Bundle	=

SHRUBS

Species	Size	# of Bundles	Cost	Total Cost
Freedom, Honeysuckle	12"-18"	X	12.50/Bundle	=
Villosa Lilac	12"-18"	X	9.90/Bundle	=
Dogwood Redosier	2'-3'	X	9.90/Bundle	=
Am. Highbush Cranberry	12"-18"	X	9.90/Bundle	=

Total No. Bundles/Trees _____

SUBTOTAL _____
SALES TAX (6.5%) _____
TOTAL COST _____
25% Down Payment _____
AMOUNT DUE _____

Payment In FULL is due on all orders if \$40.00 or Less.

Upon signing below, purchaser understands these conditions.

SIGNATURE _____

Southern Minnesota Nitrogen Rate Trials & Fertilizer Outlook Meeting:

An on-farm nitrogen rate meeting will be held on February 15th, 2007, at 9:30am. The location is yet to be determined. Mankato is the tentative location, though you will have to call to confirm this. For information on location, please call Kevin at 507-934-4140, or Blake at 507-931-2550.

Speakers will include Ryan Miller with the University of Minnesota Extension, David Mulla from the University of Minnesota, Jose A. Hernandez with the University of Minnesota, and Brian Williams from the Minnesota Department of Agriculture.

This meeting will cover issues including Nitrogen Rate Results, Nutrient Management Initiative, and US/World Fertilizer supply and demand outlook, as well as a farmer panel.

NRCS New Employee Introduction:

Hello!! My name is Jodene Negen and I am the new Soil Conservation Technician at the Saint Peter and Gaylord Field Offices. I will share time between these two offices working three days a week in Nicollet County and two days in Sibley County.

Prior to moving to Saint Peter, I worked for two summers as an NRCS WAE in the Olivia Field Office in Renville County, which is near my hometown of Blomkest, MN. This experience allowed me to become familiar with the agency and to learn many of the skills needed to carry out my new position.

I graduated college from Southwest MN State University in Marshall, MN in 2005 where I obtained my bachelors degree in biology as well as a minor in environmental science. It was here that I became more interested in the environment and a career in conservation.

As a Soil Conservation Technician, my duties will be to work with landowners to develop land management systems. This includes conducting surveys, assisting with the development and implementation of conservation plans, and determining the need and feasibility for practices such as terraces, waterways, and conservation tillage.

I am very excited about this opportunity and look forward to meeting and working with you in the future.



Minnesota Association of Soil and Water Conservation

Districts, 70th Annual Meeting:

This year marked the 70th annual MASWCD meeting, held in Bloomington, MN. The annual convention is put on by the MASWCD to help local Conservation Districts address current conservation issues. The convention brings together Conservation Districts from across the state. This networking allows everyone to be up to date on issues, and new programs coming up within the state.

Both employees and supervisors attend mini training sessions, which offer information on everything from policy making to local conservation issues. This information is then passed onto landowners throughout each county in the state.

The Nicollet Soil and Water Conservation District would like to extend their thanks to the following for contributions made to the annual auction which is held at the end of the convention. This auction helps raise money to continue the strong conservation mission that MASWCD works for.

-Zin's Implement of Nicollet for the 9760 John Deer Combine Model Toy.

-First National Bank of St. Peter for the Tape Measure, Flashlight, and Coffee Mugs.

-Traverse Elevator of Traverse for the donation of money.

-UFC Coop of Lafayette for the 2 Bobcat Model Toys.

-Canopy Insurance of LeSueur for the Shirt and Basket of Nuts.

-Citizens Bank of Lafayette for the Basket of Goodies.

-Arnold Implement of North Mankato for the International Tractor Model Toy.

-Dave's Place of Lafayette for the Collector Mug.